

OCAD® 10

What's New?

GPS

GPS Real Time

- Requirements (DGPS, Number of Satellites, HDOP) and their Handling Added
- Filter Length Setting
- Two Modes: Geo-Referenced (OCAD9) or Adjusted (OCAD8)
- Log II Received GPS Positions to NMEA File (optionally)

GPS Box

- Show DPGS and HDOP
- Pause Measurement
- Append Object
- Normal and Corner Point Mode for Line and Area Objects
- Place Point Object at Average Position of Several Values
- Turn On/Off Filter
- Turn On/Off Accuracy Circle
- Button to Open GPS Real Time Settings Dialog

Adjust GPS

- Turn On/Off Adjust Points
- Maximal Number of Adjust Points Increased to 32

Import from GPS device

- Import NMEA Files
- Assign Symbols for Waypoints and Tracks

Coordinate System

- US-State Plane Grids

Extras

- Preferences: New Dialog with Thematic Pages
- Set Maximum Map Size (4 x 4m or 80 x 80m for OCAD Professional)
- Disable Following for Double Line Side Lines
- Set Default Symbol Folder
- Warning: Hidden Background Maps in Spot Color View
- Drag and Drop Files From Windows Explorer to OCAD
- Backup Function with Automatic File Name

- Real Time Switch between Languages

DEM (Digital Elevation Model)

- Import DEM (ESRI ASCII-Grid, ASCII-Grid XYZ-File)
- Export DEM (ESRI ASCII-Grid, ASCII-Grid XYZ)
- Display Elevation at Cursor Position
- Open/Close OCAD DEM
- Show DEM Info
- Calculate Contour Lines, Hypsometric Maps, Hillshadings
- Calculate Profile
- Export Profile as BMP, GIF and OCAD Map
- Print Profile

Usability

- More Shortcuts
- Toolbar Customizing
- Several GUI Styles
- Tile Window Vertically
- Recently Exported Documents List
- Mobile Toolbar (Shift, Ctrl, F1 etc. Buttons)
- Numeric Keypad Toolbar
- Display: Set Cursor Color (Black, Blue, Red, Purple, Yellow)
- Display: Set Splitter Width (Normal or Large) between Drawing Area and Symbol Box
- Editing: Set Mark Size (Normal, Large, Very Large)
- Editing: Set Mark Color
- View Mode is Shown in Status Bar
- Show/Hide Status of Map, Background Maps, Symbols is Shown in Status Bar

New OCAD 10

New OCAD 10



the smart software for cartography

OCAD AG
Mühlegasse 36
CH-6340 Baar/Switzerland
Telefon (+41) 41 763 18 60
Fax (+41) 41 763 18 64
info@ocad.com
www.ocad.com

Mapping Framework

Map Display

- Faster Text Rendering (optionally)

Map Navigation

- Previous View, Next View
- User Defined Zoom
- Zoom In and Out with Ctrl + Mouse Scroll
- Scroll Horizontally with Shift + Mouse Scroll
- Rotate Map View (optionally)
- Create and Manage Bookmarks

Map Queries

- Select Graphic Objects and Image Objects
- Extended Map Info Dialog (General, Symbols, Colors, Fonts, Background Maps, Database)

Page Layout and Printing

- Map Scale added to Default Print Scales
- Save Settings without Printing (Close Button)

Symbolization

Symbol Editor

- Add Point Symbol to Text Symbol
- For Text more Anchor Points (Top, Middle, Bottom)

Symbol Manipulation

- Graphic, Image and Unsymbolized Objects: Show/Hide
- Select Symbol by Color

Symbol Box

- Lock Symbol Positions (optionally)
- Selected Symbol Blinking (optionally)
- Sort Symbol by Status (Normal, Protect, Hide)
- Move Group in Symbol Tree
- Symbol Tree Groups: Normal, Protect and Hide
- Multiple Selection of Symbols in Symbol Favorites

Background Maps

- Open several Files at once
- Open BMP, JPG and GIF Geo-Referenced
- Open OCAD Files Geo-Referenced

- Open Encrypted OCAD Files (eocd)
- Adjust Background Map: Added to Undo Function
- Open Background Maps from Background Map Options Dialog
- Background Map Info for OCAD File
- Relink Background Maps

Drawing

- Change Drawing Mode with Tab Key (also while Drawing)
- Numeric Mode: Show Start Point
- Numeric Mode: Length and Angle also for Point Objects

Editing

- Smooth for Several Objects at once
- Measure Distance between two Point Objects
- Cut: Make only Virtual Gap
- Change Symbol added to Undo List
- Change Line Text Object to Text Objects
- Find and Replace Text
- Rotate Objects by Angle
- Align Objects Horizontally or Vertically
- Change Point Types for Selected Objects

Interoperability

Import

- Scalable Vector Graphics (SVG)
- XYZ Files

Export

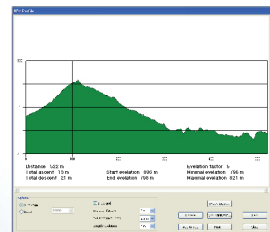
- Export KML (Google Earth)
- Export Encrypted OCAD File (eocd)
- Export BMP, JPG and GIF Geo-Referenced
- Export Partial Map Optionally with Selected Object
- Export Dialog: Save Settings without Exporting (Close Button)

Database

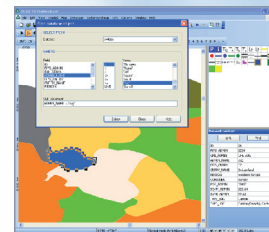
- Select Objects with SQL Statements (SQL Query Builder)
- Show Selected Records in Table
- Active Hyperlinks
- More Options for Assign Text
- Assign Text/Angle for all Datasets (optionally)
- Delete Database Record when Deleting Object
- Relink Datasets
- Link Object: Search Next Free Key
- Link Multiple Objects to the same Record
- Place Assigned Text at the Centroid of Area Objects

Color Management

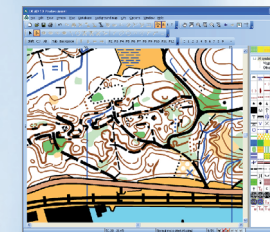
- Duplicate Color
- Show and Delete Unused Colors
- Colors: Save Report in Word, Excel, Html or Text File
- Spot Colors: Save Report in Word, Excel, Html or Text Format



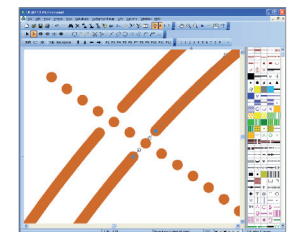
Digital Elevation Model: Contour Lines, Hypsometric Maps, Hillshadings



SQL-Query Builder for Database Requests



New Windows Office 2003 Style



Virtual Gap: Masking out object without disconnecting it